

DESCRIPTION:

AMC MODEL SWN-218-2DR-STD OPTION RAD, 1307F, HS20NS, HI80DB IS A SINGLE POLE TWO THROW, REFLECTIVE SWITCH MODULE WITH VERY HIGH ISOLATION, LOW LOSS, HIGH SPEED AND WITH INTEGRAL TTL DRIVER, DESIGNED FOR BROAD BAND OPERATIONS.

REVISIONS				
ZONE	REV.	DESCRIPTION	DATE	APPROVED
	-	ORIGINAL RELEASE	10/18/07	

SPECIFICATIONS

- FREQUENCY RANGE:..... 13 TO 14 GHz
- INSERTION LOSS:..... 13 TO 14 GHz - 1.9 dB MAXIMUM
- ISOLATION:..... 13 TO 14 GHz - 80 dB MINIMUM
- VSWR:..... 13 TO 14 GHz - 2.0:1 MAXIMUM
- SPEED:..... DELAY ON: 20 nS MAXIMUM
DELAY OFF: 20 nS MAXIMUM
- POWER INPUT:.....(CW)+20 dBm (STANDARD), +10 dBm (HIGH SPEED)
- SURVIVAL POWER:..... 1 WATT CW, 10 W PEAK (1 uSEC)
- CONTROL:..... TTL LOGIC "0"= J1-J2 ON, "1"=J1-J3 ON
- POWER SUPPLY:.....+5V @ 100 mA MAXIMUM
-5V @ 75 mA MAXIMUM
- CONNECTORS:
RF:..... SMA FEMALE
CONTROL:..... SOLDER PIN

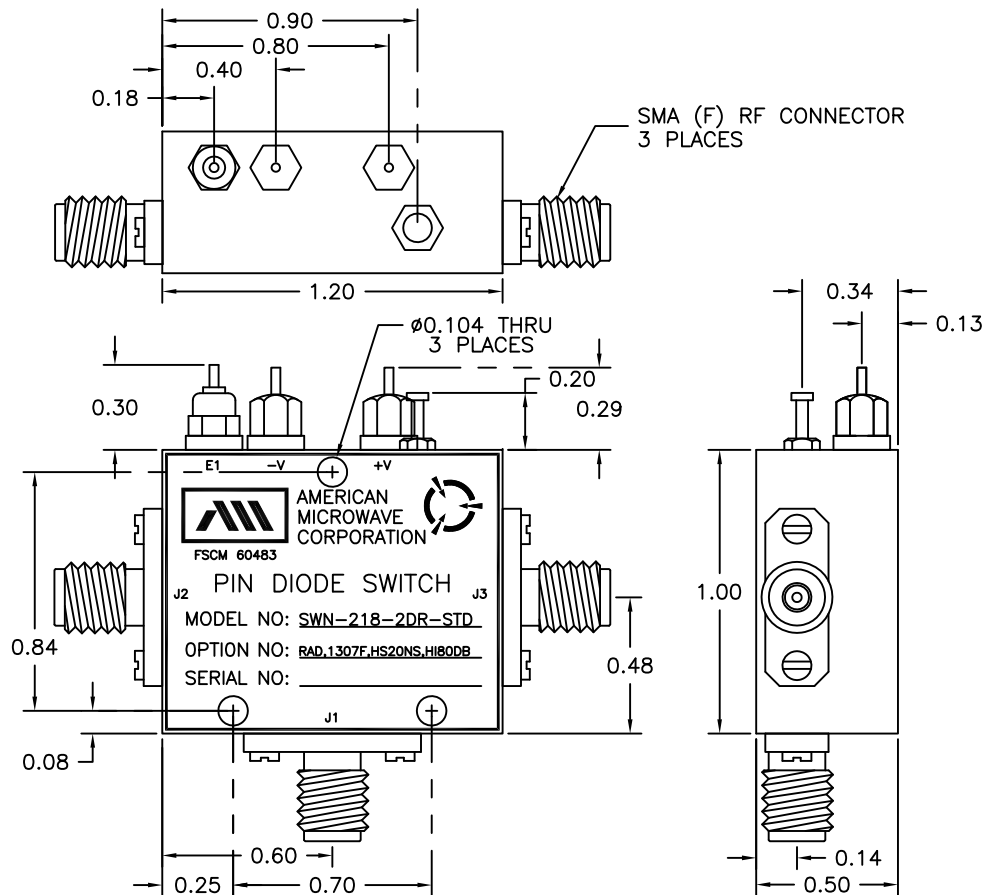
OPTIONS:

- RAD SPECIAL HIGH SPEED DRIVER
- 1307F OPTIMIZED FREQUENCY 13 TO 14 GHZ
- HS20NS HIGH SPEED 20ns
- HI80DB HIGH ISOLATION 80dB

ENVIRONMENTAL RATINGS:

- TEMPERATURE:.....-55°C TO +85°C (OPERATING)
-65°C TO +125°C (STORAGE)
- HUMIDITY:..... MIL-STD-202G, METHOD 103B COND. B
- SHOCK:..... MIL-STD-202G, METHOD 213B COND. B
- VIBRATION:..... MIL-STD-202G, METHOD 204D COND. B
- ALTITUDE:..... MIL-STD-202G, METHOD 105C COND. B
- TEMPERATURE CYCLE:..... MIL-STD-202G, METHOD 107D COND. A

NOTE: SPECIFICATIONS WILL VARY OVER OPERATING TEMPERATURE
NOTE: THE ABOVE SPECIFICATIONS ARE SUBJECT TO CHANGE OR REVISION



ALL DIMENSIONS ARE IN INCHES
TOLERANCES:
X.XX ±0.020
X.XXX ±0.010

AMERICAN MICROWAVE CORPORATION

7311-G GROVE ROAD
FREDERICK, MARYLAND 21704 USA
TEL: 301-662-4700 FAX: 301-662-4938
WEBSITE: www.americanmicrowavecorp.com
E-MAIL: sales@americanmicrowavecorp.com
ISO 9001:2000 CERTIFIED



APPROVALS		DATE	TITLE			
DRAWN <i>PRB</i>		10/18/07	PRODUCT FEATURE SWN-218-2DR-STANDARD OPTIONS: RAD, 1307F, HS20NS, HI80DB SOLID STATE SWITCH			
CHECKED			SIZE	FSCM NO.	DWG NO.	REV.
ISSUED			A	60483	100-4427-126	-
			SCALE	SHEET		
			N:S	1 OF 4		